



SOLOBEAM

REVISION: H

EFFECTIVE: 9/2018

SOLOBEAM[®]

LED DOWNLIGHT FIXTURES FOR ELEVATORS



**PATENTED
PRODUCT**

SOLOBEAM[®]

SOLOBEAM by Man-D-Tec[®]

**PATENTED, HIGH PERFORMANCE LED LIGHTING SYSTEM,
DESIGNED SPECIFICALLY FOR ELEVATOR APPLICATIONS.**

Warm white 4 watt LED output that produces 269 lumens per fixture. Systems include a dimmer control and prewired harnesses for easy installation. The fixture diameter and exclusive, easy-mount design is the same as our halogen series, allowing existing ceilings to be reused for upgrades to our LED systems. Our SmoothBeam[®] technology produces a wide angle light output with even lighting (eliminates pixilation).

***Also available in: 2700k, 3500k, 4000k, 6200k, & BLUE**

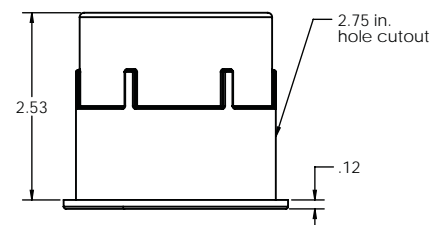
Product Specifications on the back of page.



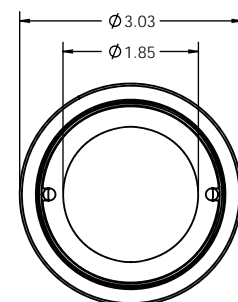
FOR OPTIONS SEE
ACCESSORIES



FOR LIGHT CONFIGURATIONS SEE
DESIGN STUDIO



SIDE VIEW



TOP VIEW



448D
ELEVATOR CONTROL,
ELEVATOR ACCESSORY
E329545



1.800.944.6263



WWW.MANDTEC.COM

SOLOBEAM

REVISION: H
EFFECTIVE: 9/2018

SOLOBEAM[®]
SPECIFICATIONS

Fixture
(SOLOBEAM)


MATERIAL	Aluminum Die Casting		 44BD ELEVATOR CONTROL, ELEVATOR ACCESSORY E329545
DIMENSIONS	2.53" 2.75" 3.03" Uses Same Hole Cutout Size as Our H-DL™ Fixtures.	Overall Height Cutout Hole Overall Diameter	
MOUNTING	Retainer Clamp w/ "L" Bracket to Prevent Fixture Rotation		
FINISHES	Black Brushed Polished White Gold	Powder Coat STANDARD #4 Silver Brushed Finish (Option) High Luster #8 Mirror Finish (Option) Powder Coat (Option) Powder Coat (Option)	
OUTPUT	269 Lumens 337 Lumens Lumen output per LM-79 report by an iAS Accredited Laboratory	Warm White (3,000k) Neutral White (4,000k)	
LED	Wattage Reflector	4 Watts of LEDs Per Fixture SmoothBeam® Technology - Wide Angle SAVE EVEN MORE! Pre-Installed Dimmer Control is Included! Adjust from 1 Watt to 4 Watts of LED Output Per Fixture	
LUMINOUS EFFICACY	62.8 82.8	Lumens Per Watt (Warm White) Lumens Per Watt (Neutral White)	

***Also available in:
2700k, 3500k,
4000k, 6200k,
& BLUE**

TO REPLACE LED MODULE

Once Installed, unthread from fixture inside of the cab using our custom extraction tool. This allows future replacements without lowering the cab ceiling. This design is highly vandal resistant, yet allows for simple future replacement.

Power
Supply

MATERIAL	.060 Aluminum		 44BD ELEVATOR CONTROL, ELEVATOR ACCESSORY E329545
DIMMER	INCLUDED		
VOLTAGE	Input: 115 VAC (220VAC Also Available)		

Wiring

SECONDARY (OUTPUT)	Pre-harnessed with quick connects at power supply and at each fixture
---------------------------	---

Emergency
(Optional)

ELS-SB™	Powers (2) two SoloBeam LED fixtures to meet ANSI 17.1 & ASME 17.3-2008 Elevator Code and mounts in SoloBeam power Supply.
----------------	--

EXCEEDS A17.3 4-HOUR RUNTIME CODE REQUIREMENT FOR EMERGENCY LIGHTING.



MAN-D-TEC, INC.
8175 E. PARADISE LANE
SCOTTSDALE, AZ 85260

P. 480.998.0325
F. 480.998.0318

1.800.944.6263
WWW.MANDTEC.COM