

QUICK CAB[®]
ELEVATOR INTERIORS

A **VANTAGE** Company



PRODUCT CATALOG

Quick Cab Elevator Interiors enhance your cab interiors so that they complement the other finishes in your building—efficiently and cost-effectively



FOUR TIMES
THE SELECTION

Designs

- Horizontal Panels
- Vertical Panels
- Combination Horizontal/ Vertical Panels
- Enhanced Accents

Materials

- Full Line of Wilsonart® & Formica® Brand Laminates
- Full Line of Rigidized & Rimex Group Metals
- Full line of Glass and Mirror
- Full Line of Wood & Stone Veneers



HALF THE
INSTALLATION TIME

**Four hour installation
time utilizing:**

- Quick Cab™ Installation System
- True Vent™ Base
- Extruded Aluminum "Dura-Spline"
- Stainless Steel Reveal Accent Strips
- Stainless Steel Frieze
- Integrated Pad Studs



AT A FRACTION
OF THE COST

**Standard interior
package (no additional
cost) includes:**

- Shop Drawings
- Sample Chips
- Handrails
- Pad Studs

TABLE OF CONTENTS



3 DESIGNS

Delridge | Montlake
Fremont | Eastlake
Highlands | Newcastle
Brighton | Cascade
Gatewood | Cubix
Ravenna | Interbay
Laurelhurst | Ligna
Briar | Briar+Mirror
Medina | Medina+Mirror

4 QUICK CAB™ INSTALLATION SYSTEM

13 DESIGN CENTER

Panel Directions
Enhanced Accents
Choice of Materials

18 QUICK CAB'S ELEVATOR CONFIGURATOR

19 CEILINGS

20 HANDRAILS, BUMPERS & PROTECTIVE PADS

21 WEIGHT CHART

22 QUOTE REQUEST

22 ABOUT US

QUICK CAB™ INSTALLATION SYSTEM

The Quick Cab™ Installation System is engineered into every Quick Cab® elevator interior from floor to ceiling. Our patented system uses the spline and groove installation method which eliminates the need and hassle of clips and jigs. This ensures that your interiors are quicker and easier to install. That means less elevator downtime, and lower installation costs. Plus, with our wider reveals and other unique design elements, your cab is more-pleasing to look at.

WHY CHOOSE QUICK CAB®

- **Your cab interior matches the other finishes in your building.**
- **Wall panels, ceiling panels, and all components are modular** and can be replaced individually (quickly and easily) if damaged.
- **Panels connect using a spline and groove system, creating a tight bond.** When mounting larger panels that bow or flex, this bonding ensures a tight fit to the wall and better looking cabs.
- **Wider corner reveals and panel reveals create a better-looking finish,** especially when the cab shell is not square (which is often). The larger gap floats any discrepancies in the lines and seams, leading to better-looking finished product.
- **Our unique True Vent™ bases face down** so that they do not collect debris, giving a more pleasing visual appeal.



DESIGNS



DELRIIDGE *Horizontal Panel Design*



- Level 1:** Stainless Steel True Vent Base
- Level 2:** Wilsonart® Biltmore Cherry Laminate
- Level 3:** Wilsonart® Biltmore Cherry Laminate
- Level 4:** Wilsonart® Biltmore Cherry Laminate
- Level 5:** Wilsonart® Biltmore Cherry Laminate
- Level 6:** Stainless Steel Frieze

MONTLAKE *Horizontal Panel Design*



- Level 1:** Stainless Steel True Vent Base
- Level 2:** Wilsonart® Fusion Maple Laminate
- Level 3:** Stainless Steel Handrail Backer
- Level 4:** Wilsonart® Fusion Maple Laminate
- Level 5:** Wilsonart® Fusion Maple Laminate
- Level 6:** Stainless Steel Crown Panel
- Level 7:** Stainless Steel Frieze

FREMONT *Vertical Panel Design*



- Level 1:** Stainless Steel True Vent Base
- Level 2:** Wilsonart® Fusion Maple Laminate
- Level 3:** Stainless Steel Frieze

EASTLAKE *Vertical Panel Design*



- Level 1:** Stainless Steel True Vent Base
- Level 2:** Wilsonart® Biltmore Cherry Laminate
- Level 3:** Stainless Steel Handrail Backer,
- Level 4:** Wilsonart® Biltmore Cherry Laminate
- Level 5:** Stainless Steel Crown Panel
- Level 6:** Stainless Steel Frieze

HIGHLANDS *Horizontal / Vertical Panel Design*



- Level 1:** Stainless Steel True Vent Base
- Level 2:** Horizontal Wilsonart® Tan Echo Laminate
- Level 3:** Vertical Wilsonart® Tan Echo Laminate,
- Level 4:** Stainless Steel Frieze

NEWCASTLE *Horizontal / Vertical Panel Design*



- Level 1:** Stainless Steel True Vent Base
- Level 2:** Wilsonart® Hampton Walnut Laminate
- Level 3:** Stainless Steel Handrail Backer,
- Level 4:** Wilsonart® Hampton Walnut Laminate
- Level 5:** Stainless Steel Crown Panel
- Level 6:** Stainless Steel Frieze

BRIGHTON *Horizontal Panel Design*



- Level 1:** Stainless Steel True Vent Base
- Level 2:** Wilsonart® Milano Amber Laminate
- Level 3:** Stainless Steel Handrail Backer,
- Level 4:** Mirror (Side and Rear Walls)
- Level 5:** Mirror (Side and Rear Walls)
- Level 6:** Stainless Steel Crown Panel
- Level 7:** Stainless Steel Frieze

CASCADE *Horizontal / Vertical Panel Design*



- Level 1:** Stainless Steel True Vent Base
- Level 2:** Stainless Steel
- Level 3:** Stainless Steel Handrail Backer
- Level 4:** Wilsonart® Blackstar Granite Laminate
- Level 5:** Wilsonart® Blackstar Granite Laminate
- Level 6:** Stainless Steel Crown Panel
- Level 7:** Stainless Steel Frieze

GATEWOOD *Horizontal / Vertical Panel Design*



- Level 1:** Stainless Steel True Vent Base
- Level 2:** Wilsonart® Fusion Maple Laminate
- Level 3:** Stainless Steel Handrail Backer
- Level 4:** Wilsonart® Fusion Maple Laminate
- Level 5:** Wilsonart® Fusion Maple Laminate
- Level 6:** Stainless Steel Crown Panel
- Level 7:** Stainless Steel Frieze

CUBIX *Horizontal / Vertical Panel Design*



- Level 1:** Stainless Steel True Vent Base
- Level 2:** Wilsonart® Grey Pampas Laminate
- Level 3:** Wilsonart® Grey Pampas Laminate
- Level 4:** Wilsonart® Grey Pampas Laminate
- Level 5:** Wilsonart® Grey Pampas Laminate
- Level 6:** Stainless Steel Frieze

RAVENNA *Horizontal Panel Design*



- Level 1:** Stainless Steel True Vent Base
- Level 2:** Stainless Steel
- Level 3:** Stainless Steel
- Level 4:** Wilsonart® Tawny Legacy Laminate
- Level 5:** Wilsonart® Tawny Legacy Laminate
- Level 6:** Stainless Steel Frieze

INTERBAY *Horizontal Panel Design*



- Level 1:** Stainless Steel True Vent Base
- Level 2:** Stainless Steel
- Level 3:** Stainless Steel
- Level 4:** Stainless Steel
- Level 5:** Stainless Steel
- Level 6:** Stainless Steel Frieze

LAURELHURST *Horizontal Panel Design*



- Level 1:** Stainless Steel True Vent Base
- Level 2:** Zabri Veneer
- Level 3:** Zabri Veneer
- Level 4:** Zabri Veneer
- Level 5:** Zabri Veneer
- Level 6:** Stainless Steel Frieze

LIGNA *Vertical Panel Design*



- Level 1:** Bronze True Vent Base
- Level 2:** Indian Ebony Veneer
- Level 3:** Bronze Handrail Backer
- Level 4:** Indian Ebony Veneer
- Level 5:** Bronze Crown Panel
- Level 6:** Stainless Steel Frieze

BRIAR *Horizontal Panel Design*



- Level 1:** Stainless Steel True Vent Base
- Level 2:** Wilsonart® Granite Laminate
- Level 3:** Stainless Steel Handrail Backer
- Level 4:** Cherry Veneer
- Level 5:** Cherry Veneer
- Level 6:** Cherry Veneer Crown Panel
- Level 7:** Stainless Steel Frieze

BRIAR + MIRROR *Horizontal Panel Design*



- Level 1:** Stainless Steel True Vent Base
- Level 2:** Wilsonart® Granite Laminate
- Level 3:** Stainless Steel Handrail Backer
- Level 4:** Cherry Veneer w/Mirror Inset
- Level 5:** Cherry Veneer w/Mirror Inset
- Level 6:** Cherry Veneer Crown Panel
- Level 7:** Stainless Steel Frieze

MEDINA *Horizontal Panel Design*



- Level 1:** Stainless Steel True Vent Base
- Level 2:** Cherry Veneer
- Level 3:** Cherry Veneer Handrail Backer
- Level 4:** Cherry Veneer
- Level 5:** Cherry Veneer
- Level 6:** Cherry Veneer Crown Panel
- Level 7:** Stainless Steel Frieze

MEDINA+MIRROR *Horizontal Panel Design*



- Level 1:** Stainless Steel True Vent Base
- Level 2:** Cherry Veneer
- Level 3:** Cherry Veneer Handrail Backer
- Level 4:** Cherry Veneer w/Mirror Inset
- Level 5:** Cherry Veneer w/Mirror Inset
- Level 6:** Cherry Veneer Crown Panel
- Level 7:** Stainless Steel Frieze

DESIGN CENTER



DESIGN CENTER *Step 1*

PANEL DIRECTIONS

The first consideration during the design of your elevator interior is the panel direction.

Traditionally, panels run horizontal, vertical or combination horizontal and vertical.

Examples of these three designs are shown in the Delridge, Fremont and Highlands interiors.



DELBRIDGE
Horizontal



FREMONT
Vertical



HIGHLANDS
Combination
Horizontal/Vertical

DESIGN CENTER *Step 2*

ENHANCED ACCENTS

The second consideration of the design process is the option of adding Upgraded Accents.

A traditional decorative metal Hand Rail Backer and Crown Panel (normally Stainless Steel or Bronze) add both visual appeal and durability to your interior.

Examples of these enhanced accents are shown in the Montlake, Eastlake and Newcastle interiors.



MONTLAKE
Horizontal



EASTLAKE
Vertical



NEWCASTLE
Combination
Horizontal/Vertical

DESIGN CENTER *Step 3*

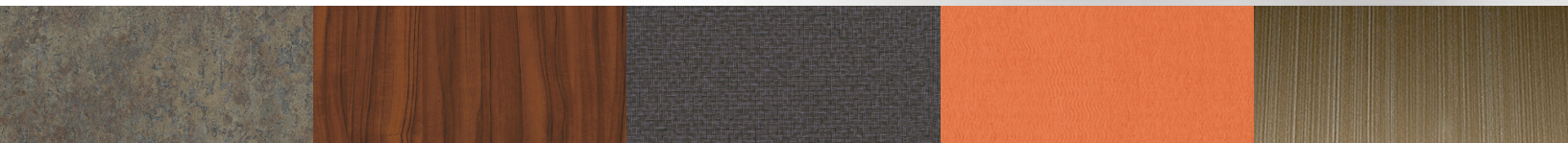
CHOICE OF MATERIALS

The final consideration in completing your elevator interior design is the choice of materials.

With Quick Cab Elevator Interiors, you have complete freedom to choose from any of the following elements for your panels, reveals or accents.

Thereby allowing you to seamlessly integrate your Quick Cab Elevator Interior with the other finishes in your building. You are only limited by your imagination and budget.

WILSONART® AND FORMICA® LAMINATES



STONE

WOODGRAIN

ABSTRACTS

SOLIDS

FIBERS

RIGIDIZED METALS AND RIMEX METALS



BRUSHED

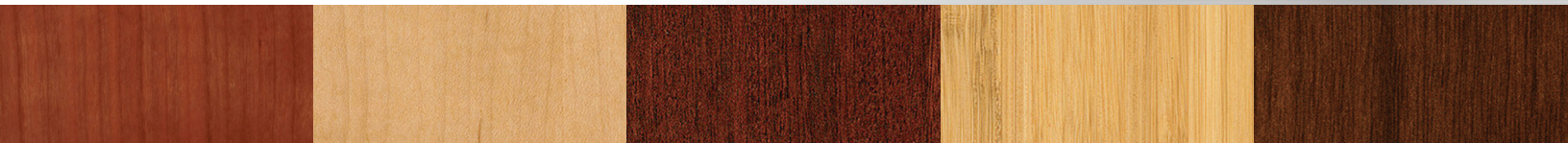
HATCHED

LINEAR

SWIRL

RANDOM

WOOD VENEERS



CHERRY

MAPLE

SAPELE

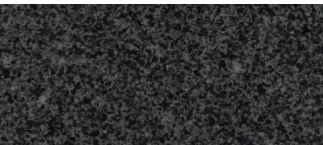
BAMBOO

WALNUT

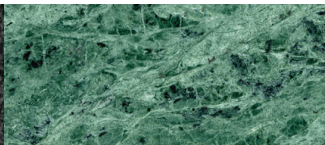
Continued on next page

DESIGN CENTER *Step 3 - CONTINUED*

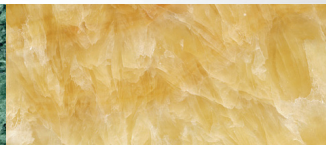
STONE VENEERS



GRANITE



MARBLE



ONYX



TRAVERTINE

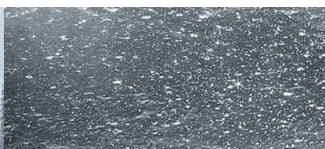


SLATE

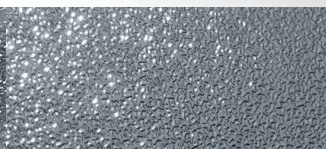
GLASS



REEDED



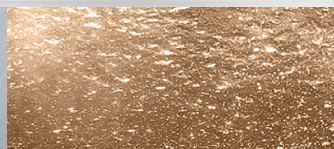
TEXTURED



PEBBLED



ETCHED



COLORLED

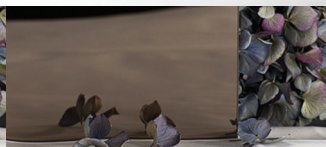
MIRROR



STANDARD (PLAIN)



GRAY



BRONZE



STARFIRE (LOW IRON)



BLACK

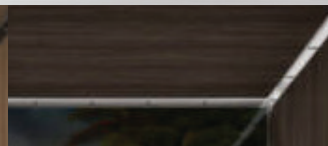
LIGHTING



LED DOWN LIGHTS



LED TUBE LIGHTS



LED PERIMETER STRIP

QUICK CAB'S ELEVATOR CONFIGURATOR

Quick Cab Elevator Interiors

Elevator Interior Designer

1 - Choose a Design

Belridge:	Montlake:	Fremont:
Eastlake:	Highlands:	Newcastle:
Gatewood:	Cubix:	Ravenna:

2 - Proceed to Modifications



Generated Model

Click and drag to look around. Scroll to zoom.

LEFT WALL BACK WALL RIGHT WALL FRONT WALL ROTATE

Design your elevator interior.
 Your materials. Your finishes.
 Your fixtures. Your way.

START DESIGNING TODAY!

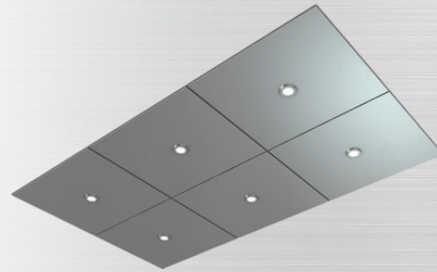


CEILING

With Quick Cab® elevator interiors, you always make a statement—even with your ceilings. We offer a variety of translucent, opaque and suspended ceilings to match the aesthetic of your elevator interior.

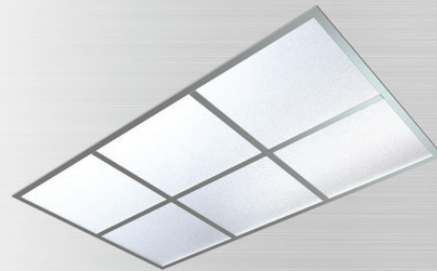
SUSPENDED

Quick Cab suspended ceilings consist of multiple #4 brushed stainless steel pans supported with a hidden Uni-Strut reinforced frame. Our all-thread system lets you mount your ceiling in multiple configurations without the need for a jig or specified mounting points. Our suspended ceilings work with your choice of low-voltage Halogen or LED down lights.



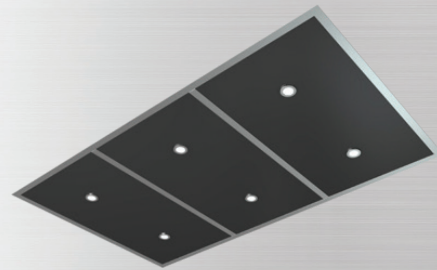
TRANSLUCENT

Quick Cab translucent ceilings consist of multiple "Twin Wall" translucent insert panels, supported by a 1½ inch satin aluminum frame. Steel angle-reinforced & bolted intersections give your ceiling rigidity and strength. Install these translucent ceiling panels under either new LED tube lights or existing fluorescent tube fixtures.



OPAQUE

Quick Cab opaque ceilings consist of multiple insert panels supported by a 1½ inch satin aluminum frame. These panels come in a variety of designs with either a metal finish, a laminate finish or a powder coat finish. Steel angle-reinforced & bolted intersections give your ceiling rigidity and strength. Our opaque ceiling panels work with your choice of low-voltage Halogen or LED down lights.



FINISHES



BRUSHED STAINLESS STEEL



POLISHED STAINLESS STEEL



BRUSHED BRONZE



COLORED POWDER COATING

HANDRAILS, BUMPERS & PROTECTIVE PADS

Quick Cab's handrails, bumpers and protective pads are designed for aesthetics, durability and ease of installation (and replacement). They come in a variety of styles, metals, finishes and sizes. They also mount from inside the cab, allowing for easier installation, removal, and replacement if damage occurs. No need to demolish your cab, or climb into the hoistway. This means less elevator downtime for your building. Pads hang directly to our patented integrated pad studs and are available in quilted canvas or vinyl material.

HANDRAILS

- 1½" diameter stainless steel or 2" flat stainless steel
- Available in curved or straight ends
- Mounting hardware included
- Other metals and finishes available



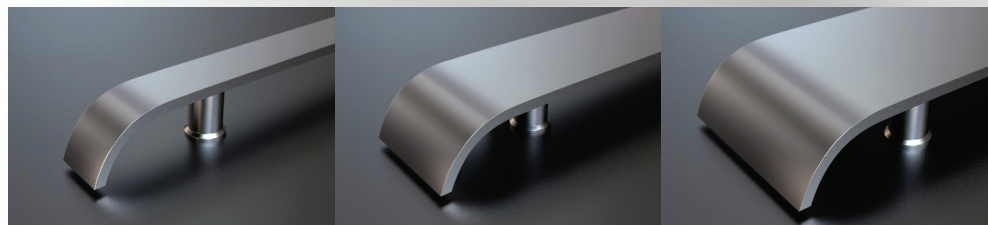
STRAIGHT

CURVED

CURVED FLAT

BUMPERS

- Flat stainless steel
- Curved or straight ends
- Mounting hardware included
- Other metals and finishes available



2 INCH

4 INCH

6 INCH

PROTECTIVE PADS

- Multi-layer toughness
- Customization
- Eco-friendliness



CORNER VIEW



FRONT VIEW

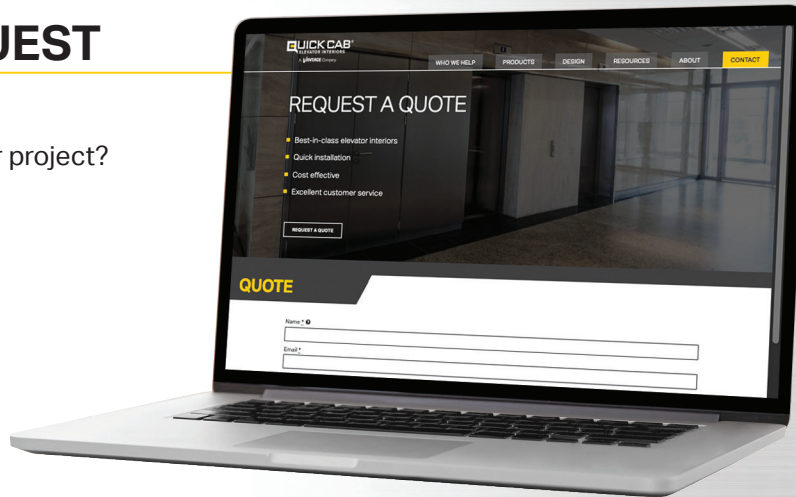
WEIGHT CHART

Elevator Weight Capacity in US Lbs.	2000#	2500#	3000#	3500#	4000#	4500#	5000#
Each 3 wall design includes: true vent base, wall panels, handrails, reveals, pad studs and frieze							
Delridge	472	499	531	577	685	694	748
Fremont	472	499	531	577	685	694	748
Highlands	472	499	531	577	685	694	748
Montlake	472	499	531	577	685	694	748
Eastlake	472	499	531	577	685	694	748
Newcastle	472	499	531	577	685	694	748
Gatewood	472	499	531	577	685	694	748
Cubix	472	499	531	577	685	694	748
Cascade	528	555	587	633	741	750	804
Ravenna	584	611	643	689	797	806	860
Interbay	680	720	766	831	994	1006	1086
Brighton	509	536	568	614	722	731	785
Laurelhurst	457	484	516	562	670	679	733
Ligna	513	540	572	618	726	735	789
Briar	476	471	500	544	645	653	704
Briar with Mirror	483	508	537	581	682	690	741
Medina	429	453	482	524	621	629	677
Medina with Mirror	466	490	519	561	658	666	714
Ceilings							
Translucent Ceiling w/ fluorescent light kit	24	28	31	36	42	45	50
Opaque Ceiling w/ installed halogen downlights	54	63	70	81	95	101	113
Suspended Ceiling w/ installed halogen downlights	119	139	153	178	208	223	248
Additional or Replacement Handrails (3 per cab)							
1.5" round	17	18	20	22	27	28	30

QUOTE REQUEST

Got a unique cab interior project?
Let's get started!

[REQUEST A QUOTE](#)



ABOUT US

Quick Cab is a product of Vertical Dimensions, a Vantage brand. Vantage provides unparalleled access to a powerhouse of world-class elevator expertise, manufacturing and customer service through a single touchpoint. Our strategic alliance provides additional

strength and support for all individual manufacturers and service providers, while customers receive a unique range of interconnected elevator solutions – to deliver the power to move.





Move Up in the World with Quick Cab

Talk with us today about your unique cab interior project.



1115 Andover Park West
Tukwila, WA 98188
Ph: 855.767.2361
Fax: 206.767.1088

sales@quickcabs.com
www.quickcabs.com
sales@vantageelevation.com
www.vantageelevation.com



Chicago 877.300.5830
New York 917.336.4597
Miami 877.241.9354
L.A. 877.300.5816
Dallas 469.706.9316
Toronto 888.425.2262